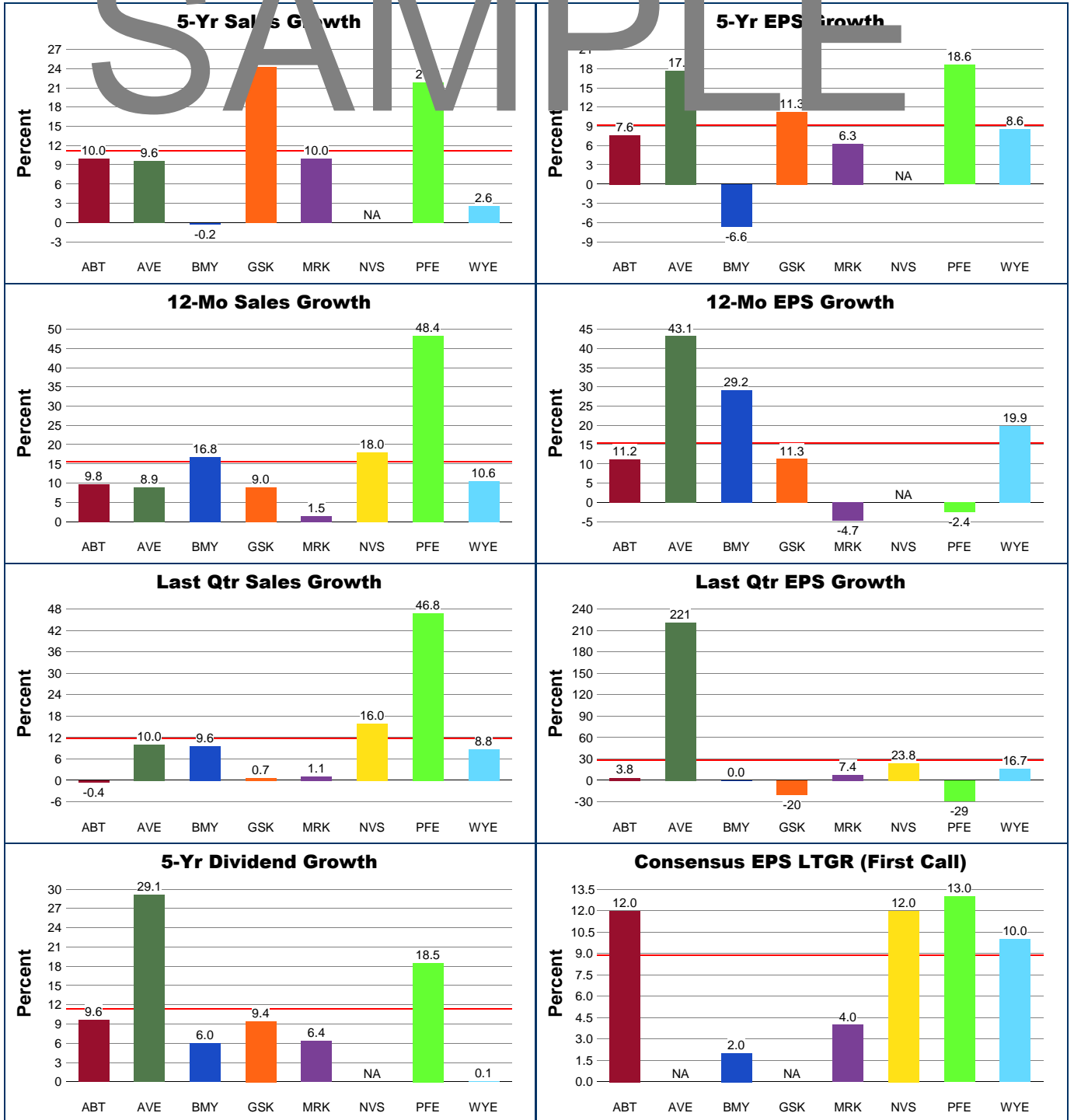


Member Data

Price Change Comparison

Name and Symbol	Market Cap (mil)	12-Mo Sales (mil)
ABBOTT LABS (ABT)	\$60,984	\$20,295
AVENTIS (AVE)	\$63,518	\$20,704
BRISTOL-MYERS SQ (BMY)	\$45,827	\$21,235
GLAXOSMITHKLINE (GSK)	\$118,647	\$35,064
MERCK (MRK)	\$99,550	\$22,545
NOVARTIS AG (NVS)	\$107,349	\$25,782
PFIZER (PFE)	\$247,070	\$49,151
WYETH (WYE)	\$45,177	\$16,177



INDUSTRY GROUP MEAN VALUE: —

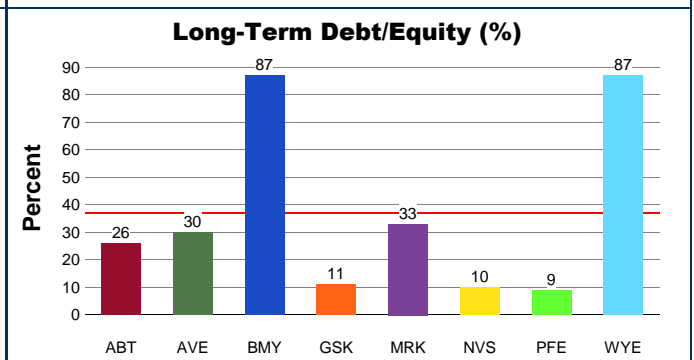
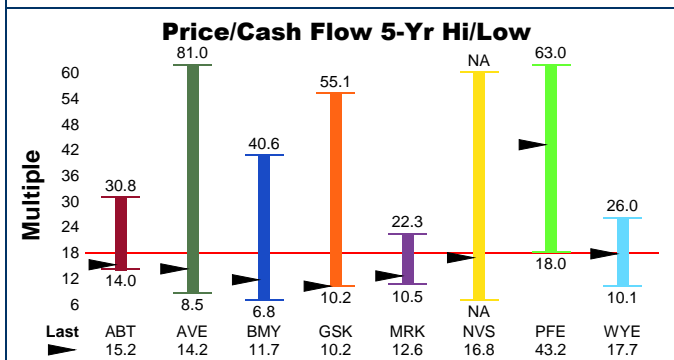
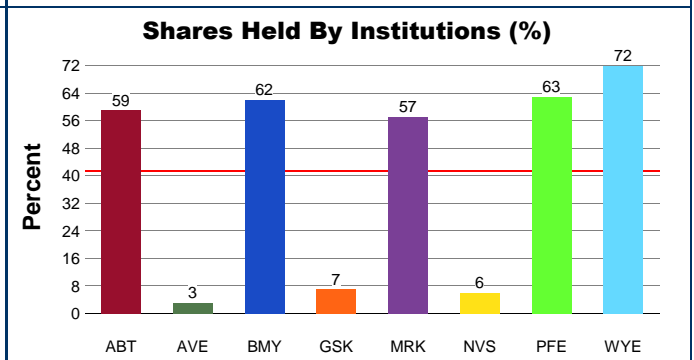
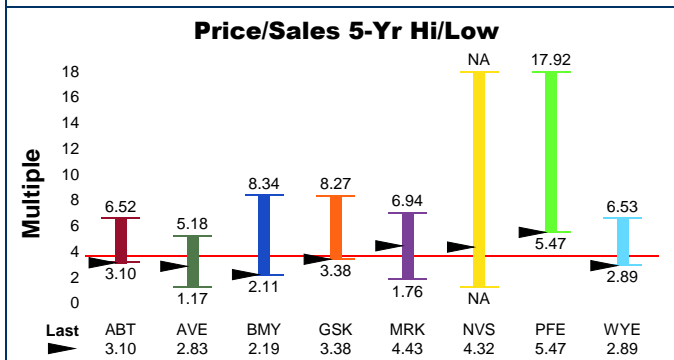
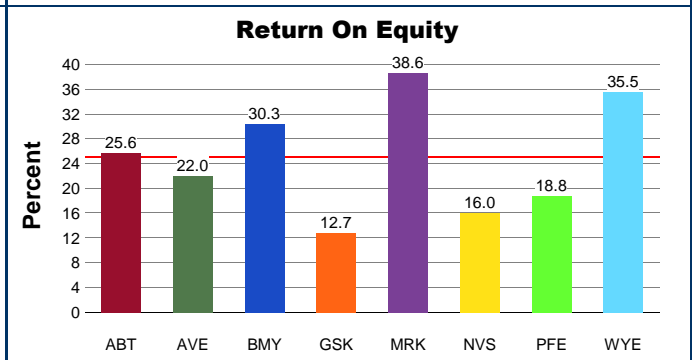
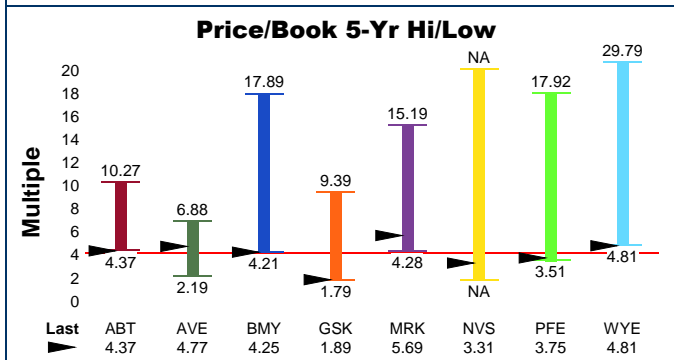
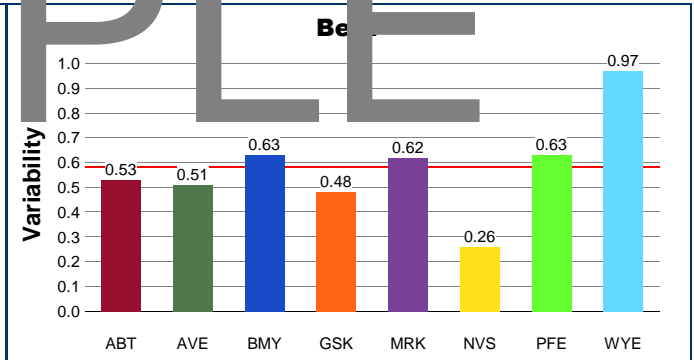
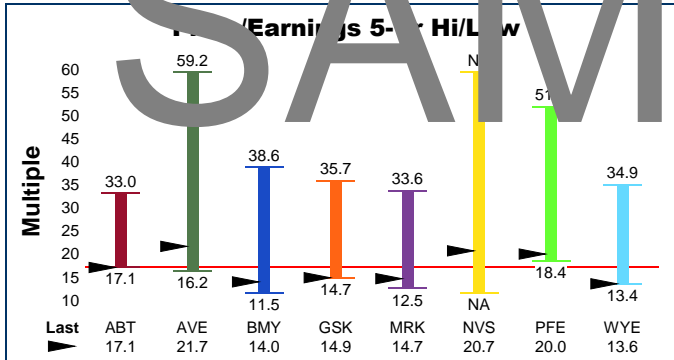
Member Data

Five Year PE Comparison

Name and Symbol	Price	Volume (100s)
ABBOTT LABS (ABT)	\$39.10	38,393
AVENTIS (AVE)	\$79.17	3,411
BRISTOL-MYERS SQ (BMY)	\$23.56	54,128
GLAXOSMITHKLINE (GSK)	\$39.39	11,917
MERCK (MRK)	\$44.80	51,765
NOVARTIS AG (NVS)	\$43.50	8,497
PFIZER (PFE)	\$32.70	154,544
WYETH (WYE)	\$34.00	50,668



SAMPLE

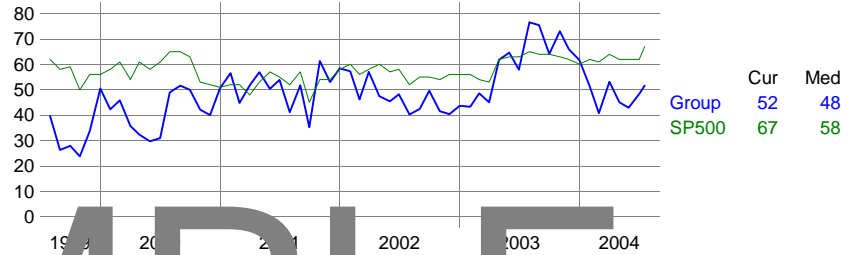


INDUSTRY GROUP MEAN VALUE: ———

Member Data

Five Year Ford Value Momentum Comparison

Name and Symbol	Quality Rating	Growth Persist
ABBOTT LABS (ABT)	A+	A
AVENTIS (AVE)	A-	C
BRISTOL-MYERS SQ (BMY)	A-	B
GLAXOSMITHKLINE (GSK)	A-	C
MERCK (MRK)	A	A
NOVARTIS AG (NVS)	A-	C
PFIZER (PFE)	A	A
WYETH (WYE)	A	B



Value Momentum

Company	Percentile
ABT	31
AVE	42
BMY	42
GSK	63
MRK	59
NVS	24
PFE	84
WYE	68

Price/Value 5-Yr Hi/Low

Company	Last	Multiple
ABT	0.59	1.39
AVE	0.62	0.39
BMY	0.81	2.04
GSK	0.59	2.20
MRK	0.74	1.36
NVS	0.76	NA
PFE	0.47	1.95
WYE	0.56	2.00

Earnings Momentum

Company	Percentile
ABT	43
AVE	24
BMY	27
GSK	26
MRK	53
NVS	68
PFE	50
WYE	29

Ford Projected Growth Rate

Company	Percent
ABT	10.0
AVE	18.0
BMY	5.0
GSK	10.0
MRK	7.0
NVS	12.0
PFE	15.0
WYE	12.0

Sales Momentum

Company	Percentile
ABT	17
AVE	51
BMY	23
GSK	21
MRK	17
NVS	41
PFE	53
WYE	44

Operating Yield (%)

Company	Percent
ABT	5.9
AVE	4.7
BMY	7.0
GSK	6.4
MRK	6.8
NVS	5.0
PFE	5.5
WYE	7.2

Price Momentum

Company	Percentile
ABT	52
AVE	60
BMY	38
GSK	56
MRK	21
NVS	49
PFE	57
WYE	23

Share Buyback (12-Mo % Change)

Company	Percent
ABT	-0.1
AVE	0.4
BMY	0.4
GSK	0.0
MRK	-0.9
NVS	NA
PFE	-3.3
WYE	0.4

INDUSTRY GROUP MEAN VALUE: —